




## Role of Coronary CT Angiography in the Evaluation of Acute Chest Pain and Suspected or Confirmed Acute Coronary Syndrome

Tasveer Khawaja, MD, , Scott Janus, MD, , and Sadeer G Al-Kindi, MD 

*Department of Medicine, Harrington Heart & Vascular Institute, University Hospitals, Cleveland, OH*

### Abstract

Advances in CT technology have resulted in improved imaging of the coronary anatomy in patients with stable coronary artery disease, using coronary CT angiography (CCTA). Recent data suggest that CCTA may play a role in higher risk patients, such as those evaluated in the emergency room with acute chest pain. Data thus far support the use of CCTA in low-risk patients with acute chest pain. Recent literature suggests that CCTA may play a role in the risk stratification of selected intermediate-risk patients. In this review, the authors discuss the emerging role of CCTA in higher risk patients, such as those with suspected or confirmed acute coronary syndrome (ACS). The excellent accuracy of CCTA in detecting obstructive coronary artery disease in patients with ACS is detailed, along with a highlighting of the safety of using CCTA in this setting. The authors also discuss the role for CCTA atheromatous plaque characterization, which is being increasingly recognized as an important predictor of clinical outcomes.

### Keywords

Coronary CT, MI, chest pain, coronary artery disease, coronary computed tomography angiography

**Disclosure:** The authors have no conflicts of interest to declare.

**Received:** October 4, 2021 **Accepted:** December 21, 2021 **Citation:** *US Cardiology Review* 2022;16:e11. **DOI:** <https://doi.org/10.15420/usc.2021.30>

**Correspondence:** Sadeer Al-Kindi, Division of Cardiovascular Medicine, Office 4525, Harrington Heart and Vascular Institute, University Hospitals, Case Western Reserve University School of Medicine, 2103 Cornell Rd, Cleveland, OH 44106. E: [sadeer.alkindi@uhhospitals.org](mailto:sadeer.alkindi@uhhospitals.org)

**Open Access:** This work is open access under the CC-BY-NC 4.0 License which allows users to copy, redistribute and make derivative works for non-commercial purposes, provided the original work is cited correctly.

Heart disease remains the leading cause of mortality in the US, with acute MI from acute coronary syndrome (ACS) being a major contributor.<sup>1</sup> Chest pain is one of the most common complaints in patients presenting to the emergency room (ER) in the US, with approximately 8–10 million annual visits.<sup>2</sup> Multimodality cardiac imaging (e.g. cardiac CT, cardiac MRI) is playing an increasingly recognized role in the identification of at-risk patients, the planning of interventions, and in the understanding of the non-coronary causes of chest pain.

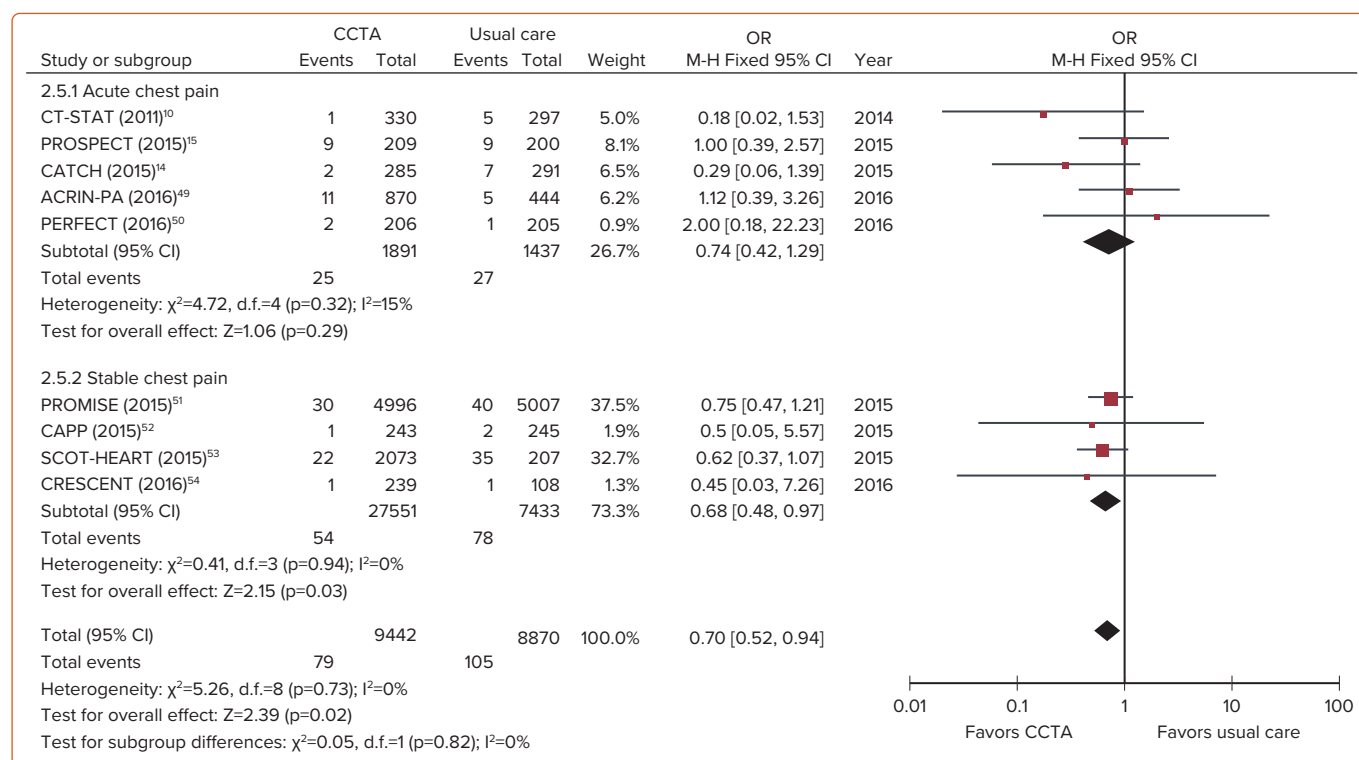
Advances in CT technology have improved spatial and temporal resolution, resulting in improved diagnostic capabilities. In the UK, coronary CT angiography (CCTA) has been recommended as a first-line imaging modality for patients with suspected coronary artery disease (CAD) since 2016.<sup>1</sup> Similarly, the European Society of Cardiology (ESC) guidelines have endorsed the use of CCTA as a first-line imaging modality in the evaluation of chest pain since 2019.<sup>3</sup> In the US, CCTA had not seen the same rate of adoption in the guidelines until the recently published 2021 multi-society guidelines for the evaluation and diagnosis of chest pain.<sup>4</sup> CCTA now has a class I indication for the evaluation of chest pain in various scenarios, including intermediate-risk patients with acute chest pain without known CAD and intermediate or high-risk patients with stable chest pain and no known CAD.<sup>4</sup> The 2014 American Heart Association/American College of Cardiology (AHA/ACC) guidelines for non-ST-elevation MI (NSTEMI) have assigned a class IIa recommendation for the use of CCTA in evaluating patients with possible ACS, with the caveats that a normal ECG, normal cardiac troponin, and no history of CAD be present.<sup>5</sup>

The challenge of imaging coronary arteries non-invasively is related to coronary anatomy and motion. Typically, being only millimeters in diameter and subject to motion artifact during the cardiac cycle, the achievement of the appropriate spatial and temporal resolution in the imaging of coronary arteries can be challenging. With the advent and more widespread availability of multi-slice multi-detector CT systems and other technological advancements, these hurdles have largely been overcome. Issues with image quality, however, can still exist. Specifically, noise, vascular enhancement, and coronary motion must all be optimized to achieve the best quality images.<sup>6</sup> In this review, we highlight the role of CCTA in the evaluation of patients with acute chest pain and possible or confirmed ACS.

### Role of CCTA in the Evaluation of Stable Chest Pain

Early studies focusing on the diagnostic performance of CCTA sought to evaluate the ability of this modality to detect significant coronary stenosis, usually defined as stenosis >50% on invasive coronary angiography (ICA). A 2018 meta-analysis compared the performance of several non-invasive diagnostic modalities to rule out significant CAD in patients with angina with either ICA or invasive fractional flow reserve (FFR) as the gold standards.<sup>3</sup> When considering CCTA, a total of nine studies with ICA as the gold standard for comparison and seven studies with invasive FFR as the gold standard for comparison were included. When the ability of these non-invasive modalities to rule out anatomically or functionally significant CAD is compared, CCTA emerged as the best modality with a pooled sensitivity of 97% (95% CI [93–99%]) in detecting anatomically significant

**Figure 1: Forest Plot from a Meta-analysis of MI Following Coronary CT Angiography Versus Standard Care in Stable and Acute Chest Pain**



CCTA = coronary CT angiography. Source: Hwang et al. 2017.<sup>7</sup> Reproduced with permission from Wiley.

CAD and a pooled sensitivity of 93% (95% CI [89–96%]) in detecting functionally significant CAD, albeit at the expense of poor specificity of 78% (95% CI [67–86%]) and 53% (95% CI [37–68%]), respectively.

In a meta-analysis of 13 randomized controlled trials involving 20,092 patients (10,315 were assigned to CCTA, 9,777 assigned to functional testing), CCTA was associated with higher rates of CAD diagnosis (RR 2.80; 95% CI [2.03–3.87]), an increase in the prescription of both aspirin (RR 2.21; 95% CI [1.20–4.04]) and statins (RR 2.03; 95% CI [1.09–3.76]), and a reduction in MIs (RR 0.71; 95% CI [0.53–0.96]), but at the expense of increases in both ICA (RR 1.33; 95% CI [1.12–1.59]) and revascularization (RR 1.86; 95% CI [1.43–2.43]). This was also replicated in another meta-analysis of randomized trials comparing CCTA with usual care in stable CAD and acute chest pain (Figure 1).<sup>7</sup>

Taken together, CCTA is a powerful modality for ruling out significant CAD as the etiology of chest pain; it has superior sensitivity, albeit with worse specificity. The identification of early-stage plaques and higher rates of CAD diagnosis enables higher rates of initiation and intensification of preventive therapies, lowering the risk of MI. CCTA can act as a gatekeeper for unnecessary invasive catheterizations, where traditionally one-third of patients undergoing ICA have non-obstructive disease.<sup>8</sup>

### CCTA in the Evaluation of Acute Chest Pain in the Emergency Room

Chest pain is among the most common causes of ER visits, with approximately 8–10 million patients evaluated for chest pain annually in the US alone.<sup>2</sup> Compared with stable chest pain, patients with acute chest pain in the ER are at higher risk for adverse outcomes. A sensitive test for the evaluation of these patients is thus required to avoid unnecessary hospitalizations, reduce the length of stay (LOS) and cost, and provide a

safe mechanism for ruling out significant CAD that may benefit from invasive therapies. Several trials have evaluated CCTA in the evaluation of chest pain in the ER in comparison with functional tests (Supplementary Material Table 1).<sup>9–18</sup>

The ROMICAT-II trial in 2012 randomized 1,000 patients presenting with acute chest pain (without ECG changes or troponin elevation) to early CCTA or standard evaluation in the ER.<sup>12</sup> There was no difference between the study arms with respect to clinical outcomes, but CCTA resulted in more patients discharged from the ER (47% versus 12%,  $p<0.001$ ), LOS reduced by 7.6 hours, and similar cost of care, albeit at the expense of increased downstream testing and higher radiation dose.<sup>12</sup> The ACRIN-PA study randomized 1,370 patients with chest pain in the ER with TIMI scores 0–2 and no ischemic changes on ECG to CCTA or functional stress testing prior to evaluation of serum troponin. Only 84% of those randomized to CCTA underwent the scan and of those, 83% had no obstructive CAD. As has been demonstrated in stable chest pain populations, patients undergoing CCTA were more likely to be diagnosed with CAD (9.0% versus 3.5%), and less likely to have ICA without significant CAD. The 1-year event rate was very small and not different between the arms. That study provides practical evidence of the short-term safety of CCTA in low-risk patients and highlights its benefits.

The 2015 CATCH trial investigated the long-term clinical safety of CCTA in patients with recent-onset acute chest pain in the low- to intermediate-risk groups.<sup>14</sup> High-risk patients were excluded based on either abnormal ECG, elevation in troponin, or recurrence of chest pain during a 24-hour hospitalization.<sup>14</sup> A total of 600 patients were randomized to either CCTA or standard care (exercise ECG or single-photon emission CT) following discharge. The safety of CCTA in comparison with the standard care was established by assessing the composite of cardiac death, MI,

**Table 1: Recommendations for Coronary CT Angiography Use in Clinical Scenarios by Different Clinical Practice Guidelines**

Clinical Scenarios	US AUC <sup>55</sup>	European Guidelines <sup>28</sup>	Asian AUC/ Guidelines <sup>56</sup>	UK Guidelines <sup>1</sup>	SCCT Guidelines <sup>57</sup>
Low-risk acute chest pain with normal ECG and negative troponins	Appropriate	Recommended	Appropriate	Recommended	Appropriate
Intermediate-risk acute chest pain with normal ECG and negative troponins	Appropriate	Recommended	Appropriate	Recommended	Appropriate
High-risk acute chest pain with normal ECG and negative troponins	Uncertain	Not defined	Appropriate	Recommended	Uncertain
Low-risk acute chest pain with normal ECG and equivocal troponins	Appropriate	Recommended	Appropriate	Not defined	Appropriate
Intermediate-risk acute chest pain with normal ECG and equivocal troponins	Appropriate	Recommended	Appropriate	Not defined	Appropriate
High-risk acute chest pain with normal ECG and equivocal troponins	Uncertain	Not defined	Appropriate	Not defined	Uncertain
A selective invasive strategy after appropriate ischemia testing or detection of obstructive CAD by CCTA in low-risk patients	Not defined	Recommended	Not defined	Not defined	Not defined
Acute chest pain of uncertain cause with additional concern for pulmonary embolism and/or aortic dissection ("triple rule out")	Uncertain	Recommended	Appropriate	Not defined	Uncertain

AUC = appropriate use criteria. Source: Kumar et al. 2021.<sup>26</sup> Reproduced with permission from Elsevier.

hospitalization for unstable angina, late symptom-driven revascularization, and readmission for chest pain. The primary endpoint occurred significantly less frequently in the CCTA group than in the standard care group (HR 0.62; 95% CI [0.40–0.98]). The CCTA group was more likely to undergo revascularization compared with standard care, suggesting that the improved safety seen with the CCTA strategy may be related to timely revascularization.

In a systematic review of randomized controlled trials of CCTA (n=1,869 patients) versus usual care (n=1,397 patients) in the ER, there were no differences in outcomes (MI, death, ER visits, rehospitalizations). CCTA was associated with reduced LOS and ER costs, but it also led to an increase in ICA (OR 1.36; 95% CI [1.03–1.80]; p=0.030) and in revascularization with percutaneous coronary intervention (PCI) or coronary artery bypass grafting (CABG; OR 1.81; 95% CI [1.20–2.72]; p=0.004).<sup>19</sup> In a meta-analysis of studies up to 2016 evaluating diagnostic accuracy in the ER without troponin elevation, coronary CT had the highest accuracy (sensitivity 93%; specificity 90%), which was comparable to myocardial perfusion scintigraphy but more accurate than stress ECG and echocardiography.<sup>20</sup> A Markov microsimulation model comparing cost-effectiveness strategies in acute chest pain showed that although CCTA seems to increase short-term cost, CCTA was better than standard care and that recommended by the AHA/ACC guidelines. It also expedited ER discharge and the outpatient evaluation protocol mainly due to lower cardiovascular mortality.<sup>21</sup> *Supplementary Material Table 1* lists the major trials comparing CCTA with standard care in patients presenting to the ER with chest pain.

CT-derived FFR enables the evaluation of the hemodynamic significance of coronary stenoses, especially those in the intermediate range (50–70%) and renders many lesions non-hemodynamically significant, thus enabling timely safe discharge from the ER. The use of CT-derived FFR (FFR<sub>CT</sub>) in patients with acute chest pain was evaluated in two studies. In a substudy of the ROMICAT II trial, those with ≥50% stenosis in at least one coronary artery or those who underwent another non-invasive test were included, for a total of 116 patients.<sup>22</sup> Due to technical limitations, such as motion and blooming artifacts, 68 patients successfully underwent FFR<sub>CT</sub>. An abnormal FFR<sub>CT</sub> (≤0.80) was significantly associated with the diagnosis of ACS compared with a normal FFR<sub>CT</sub> (57.5% versus 14.3%, p<0.001) and more often required revascularization (37.5% versus 10.7%, respectively). Furthermore, abnormal FFR<sub>CT</sub> was associated with high-risk plaque features as assessed on CCTA. In a real-world study of 555 low-risk

patients (negative ECG and biomarkers) with chest pain presenting to the ER who underwent FFR<sub>CT</sub> (297CTA+ FFR<sub>CT</sub> and 258 CCTA only), the rejection rate for FFR<sub>CT</sub> was low (<2%), and there were no between-group differences with respect to clinical outcomes, diagnostic discordance with ICA, or cost. Negative FFR was more likely to be associated with non-obstructive disease (57% versus 8%).<sup>23</sup> Future prospective studies comparing the diagnostic accuracy of FFR<sub>CT</sub> with CCTA involving confirmed NSTEMI patients at higher risk are under way, with the hopes of demonstrating a reduction in the need for ICA, procedure-related risks, and medical costs.<sup>24</sup>

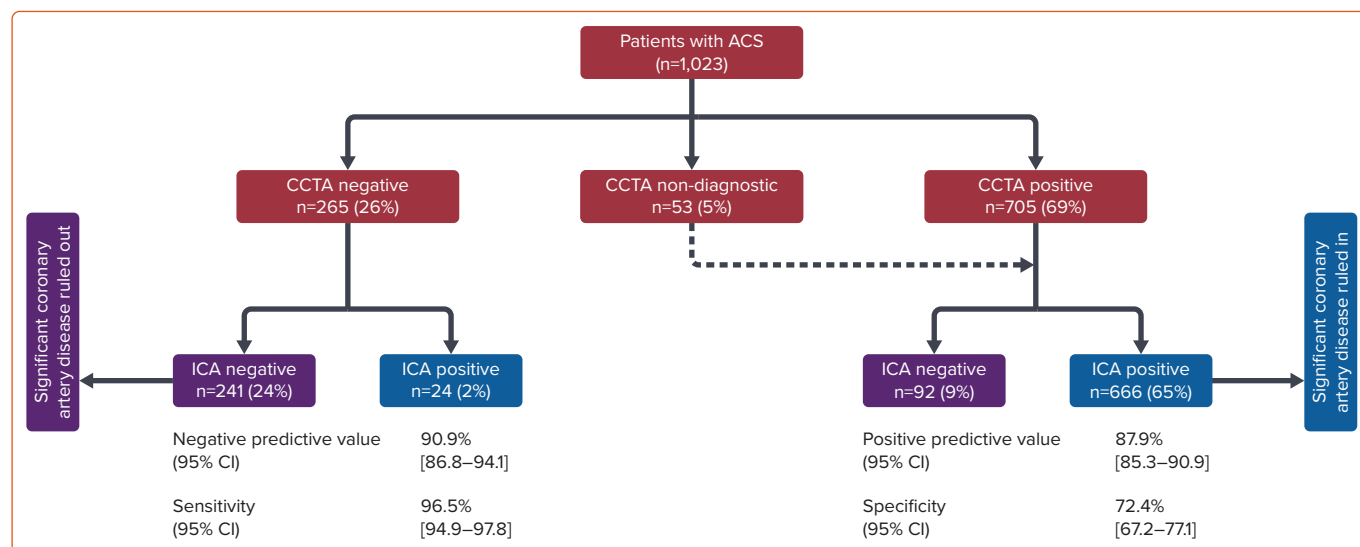
The accuracy of CCTA in the evaluation of CAD in the ER has led to the development of protocols to simultaneously evaluate major causes of chest pain in patients presenting to the ER (CAD, pulmonary embolism, aortic dissection) through a 'triple rule-out' strategy. In a larger retrospective review of 12,834 patients who underwent CCTA of the chest (triple rule out, n=1,555; CCTA, n=11,279), the diagnostic yield for CAD was similar between the triple rule-out protocol and CCTA, with higher diagnostic yield for pulmonary embolism (1.1% versus 0.4%, p=0.004) and aortic dissections (1.7% versus 1.1%, p=0.046), at the expense of higher radiation (median 9.1 versus 6.2 mSv; p<0.0001), contrast load (mean 113 ± 6 ml versus 89 ± 17 ml; p<0.0001), and higher rates of non-diagnostic imaging (9.4% versus 6.5%, p<0.0001).<sup>25</sup>

Taken together, these data suggest that CCTA is an excellent tool for ruling out significant CAD in patients presenting to the ER with chest pain, with equivalent outcomes, possibly reduced cost and length of stay, at the expense of a small increase in ICA and revascularization. *Table 1* lists the appropriateness of CCTA according to various guidelines and clinical scenarios.<sup>26</sup>

### CCTA in NSTEMI

Clinical practice guidelines favor early invasive angiography for high-risk patients with elevated troponins/NSTEMI and selective ICA in patients based on clinical risk scores. However, up to 25% of patients with presumed NSTEMI do not have obstructive disease on ICA (this is known as MI with non-obstructive coronary arteries).<sup>27</sup> This percentage may become even higher in the era of high-sensitivity troponin, with an estimated 50% of patients with a mild increase in high-sensitivity troponins having a normal ICA. Given the evolving role of CCTA in the evaluation of coronary atherosclerosis, it is important to discuss its emerging role in presumed NSTEMI. This role is highlighted by the 2020 ESC guidelines for

**Figure 2: Performance of Coronary CT Angiography in Patients with Acute Coronary Syndrome in the VERDICT Trial**



ACS = acute coronary syndrome; CCTA = coronary CT angiography; ICA = invasive coronary angiography. Source: Linde et al. 2020.<sup>29</sup> Reproduced with permission from Elsevier.

the management of ACS without persistent ST-segment elevation.<sup>28</sup> Specifically, the high negative predictive value (NPV) of CCTA for CAD allows for the exclusion of ACS.<sup>28</sup> This has been demonstrated by several trials evaluating the diagnostic utility of CCTA in confirmed or presumed NSTEMI.

The accuracy of CCTA in the diagnosis of coronary stenosis in patients with non-ST-elevation acute coronary syndrome (NSTEMI) was recently evaluated in 1,023 patients with NSTEMI who underwent CCTA as well as ICA in the VERDICT trial (Figure 2).<sup>29</sup> Significant ( $\geq 50\%$ ) coronary stenosis was diagnosed in 69% by CCTA and 67% by ICA. The per patient NPV of CCTA was 90.9% (95% CI [86.8–94.1%]) and the positive predictive value (PPV), sensitivity and specificity were 87.9% (95% CI [85.3–90.1%]), 96.5% (95% CI [94.9–97.8%]) and 72.4% (95% CI [67.2–77.1%]), respectively.<sup>29</sup> This performance is similar to that of CCTA in stable disease (reported sensitivity of 97% and specificity 78%).<sup>3</sup> The higher-risk population studied in the VERDICT trial in comparison with past studies of the diagnostic performance of CCTA did not affect the NPV. In fact, when only patients with a Global Registry of Acute Coronary Events (GRACE) score  $>140$  are considered, the NPV of CCTA remained  $>95\%$ , despite the high prevalence of 74% for significant CAD in this subgroup. An important caveat not captured by the numerical value of the PPV alone is that a threshold of  $\geq 50\%$  stenosis was used by the authors to define a positive test. Degree of stenosis alone does not completely predict the hemodynamic significance of a coronary lesion; and other factors, largely obtained via invasive procedures, must be considered before a decision about revascularization is made. In a high-risk population with a high incidence of coronary stenosis  $\geq 50\%$ , by using CCTA prior to ICA we may be subjecting most patients to unnecessary radiation and contrast. The population of the VERDICT trial is a good illustration of this given that 67% of them had at least one stenosis that occupied  $\geq 50\%$  of the vessel lumen.

The RAPID-CTCA (NCT02284191) study randomized 1,748 patients in the UK with suspected ACS and  $\geq 1$  high-risk feature (prior CAD, elevated troponin  $>99$ th percentile, or ischemic changes on ECG) to early CCTA versus standard care and followed them for a 1-year rate of all-cause death or MI. There was no difference in clinical outcomes, but CCTA led to less ICA (adjusted HR 0.81; 95% CI [0.72–0.92];  $p=0.001$ ) without a change

in coronary revascularization (HR 1.03; 95% CI [0.87–1.21]) or prescription of preventive therapy. This was at the expense of longer hospitalizations (median increase 0.21 days) and higher cost.<sup>30,31</sup> These results are in contrast to prior trials that have demonstrated a reduction in both the cost of hospitalization and length of stay with CCTA versus usual care in lower-risk patients.<sup>19</sup>

A follow-up analysis of the VERDICT trial evaluated the prognostic role of stenosis by CCTA.<sup>32</sup> That study included 978 patients who underwent ICA and CCTA and followed them for a median of 4.2 years for a composite of all-cause death, non-fatal recurrent MI, hospital admission for refractory myocardial ischemia, or heart failure. All CCTAs were blinded to clinical care, and  $\geq 50\%$  stenosis was defined as obstructive. Overall, the association between  $\geq 50\%$  stenosis and outcomes was similar between CCTA (HR 1.74; 95% CI [1.22–2.49];  $p=0.002$ ) and ICA (HR 1.54; 95% CI [1.13–2.11];  $p=0.007$ ). High-risk features, defined as obstructive left main or proximal left anterior descending artery stenosis and/or multivessel disease, were similarly associated with worse outcomes on both CCTA (HR 1.56; 95% CI [1.18–2.07];  $p=0.002$ ) and ICA (HR 1.28; 95% CI [0.98–1.69];  $p=0.07$ ). These data suggest that luminal stenosis by CCTA is an important prognostic sign for poor outcomes in those presenting with NSTEMI.

The ability of CCTA to visualize plaque and identify high-risk plaque features may aid in the classification of MI (e.g. type I versus II) and the identification of culprit lesions in patients with multivessel disease. Small studies of CCTA in patients with ACS have shown that different plaque characteristics can identify culprit plaque. For example, remodeling index (RI) has been shown to be associated with culprit lesions in patients with ACS, with an RI  $\geq 1.23$  associated with a 12-fold increased odds of culprit lesion (OR 12.3; 95% CI [2.9–68.7];  $p<0.01$ ).<sup>33</sup> Similarly, Hoffman, et al. showed that beyond luminal stenosis, remodeling index and plaque area were higher in culprit versus non-culprit lesions in patients with ACS.<sup>34</sup>

Taken together, these studies demonstrate the excellent accuracy of CCTA in detecting obstructive CAD in patients with NSTEMI and illustrate the safety of this diagnostic modality in this patient population. In the era of the COVID-19 pandemic, the diagnostic accuracy of CCTA has been

leveraged to safely evaluate patients with COVID-19 and elevated cardiac biomarkers.<sup>35</sup> To accomplish this, many sites have increased the availability of CCTA to off-hours (5 pm–11 pm).<sup>35</sup> CCTA also has the benefit of reducing staff contact time with patients to reduce the risk of COVID-19 transmission, leading to increases in use during the pandemic.<sup>35</sup> In general, although CCTA has demonstrated reductions in LOS and healthcare costs in comparison with standard care in lower-risk patient populations, the evidence for similar reductions in high-risk patients is not currently present. Further studies are needed to clarify the role of CCTA in patients with NSTEMI.

Limited data exist on the role of  $FFR_{CT}$  in patients with established ACS. In a study of 48 patients with ACS and deferred intervention on non-culprit lesions, non-culprit lesion  $FFR_{CT} \leq 0.8$  was associated with increased major adverse cardiac events over 19.5 months (adjusted HR 1.56; 95% CI [1.01–2.83];  $p=0.048$ ).<sup>36</sup> An ongoing trial is evaluating the ability of  $FFR_{CT}$  to triage patients with high-risk ACS in the ER in comparison with invasive FFR.<sup>24</sup> The role of  $FFR_{CT}$  in the evaluation of non-culprit lesions after STEMI was investigated in a single-center prospective study that evaluated 60 patients with recent STEMI who underwent CCTA and invasive FFR 1 month after STEMI. Compared with  $>50\%$  luminal stenosis by CCTA,  $FFR_{CT}$  improved the accuracy (72% versus 64%,  $p=0.033$ ) and specificity (66% versus 49%,  $p < 0.001$ ) but not sensitivity (83% versus 93%,  $p=0.15$ ) to predict invasive  $FFR \leq 0.8$ . The performance in that study population was generally lower than what was observed in stable disease in the NXT trial (sensitivity 86% and specificity of 79%), which may be related to smaller vessel volume. These findings suggest a limited application of  $FFR_{CT}$  after STEMI, and further refinement of the computational model may be needed in this population.

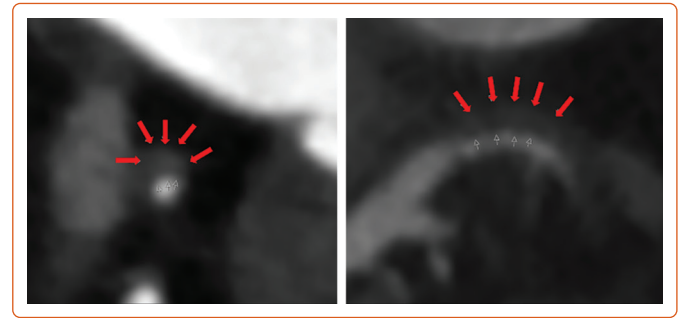
Although acute plaque rupture and resulting type I MI is often the immediate concern in NSTEMI, alternative pathologies (e.g. spontaneous coronary artery dissection [SCAD], coronary embolism and vasospastic disease) are becoming increasingly recognized as of importance. SCAD often occurs in relatively young women and disproportionately in the peripartum period (up to 18% of women with SCAD). The vast majority of patients with SCAD are managed conservatively owing to the risk of propagating the dissections with coronary intervention. Therefore, non-invasive imaging is often required to identify the location and extent of SCAD to guide therapy (Figure 3).<sup>37</sup>

### Atheroma Phenotyping with CCTA

Coronary atherosclerosis is often graded based on luminal stenosis. CCTA enables plaque characterization, which is being increasingly recognized as an important predictor of clinical outcome.<sup>15</sup> Compared with invasive modalities (e.g. intracoronary imaging), CCTA allows a full coverage of the coronary tree and is not limited by the depth of imaging, although it has lower spatial resolution ( $\sim 5$  mm with CCTA compared with  $10 \mu\text{m}$  for optical coherence tomography [OCT] and  $100 \mu\text{m}$  for intravascular ultrasound [IVUS]). Plaques can be characterized by the presence or absence of calcification, overall plaque volume, and high-risk plaque features (low attenuation, napkin ring sign, macrocalcification, and positive remodeling).

In an analysis of 472 patients who underwent CCTA in the ROMICAT II trial (32 with ACS), CTA-specific thresholds for plaque burden and degree of stenosis performed significantly better than IVUS-derived thresholds ( $p < 0.05$ ), with minimal luminal area also having a modestly superior performance ( $p=0.066$ ).<sup>38</sup> In the SCOT-HEART trial, patients with both obstructive disease and adverse plaque features (low attenuation or

**Figure 3: Coronary CT Angiography Showing SCAD in a 48-year-old Woman with Fibromuscular Dysplasia and Recurrent Coronary Artery Dissection**



SCAD = spontaneous coronary artery dissection.

positive remodeling) had a 10-fold increase in coronary heart disease death or non-fatal MI compared with patients with normal coronary arteries (HR 11.50; 95% CI [3.39–39.04];  $p < 0.001$ ).<sup>39</sup>

CCTA can also provide insights regarding pericoronary adipose tissue (PCAT), which also seems to have prognostic information, which may be due to local inflammation.<sup>40</sup> Fat attenuation index (FAI)  $\geq -70.1$  HU has been linked to a significant increase in cardiac mortality (adjusted HR 9.04; 95% CI [3.35–24.4];  $p < 0.0001$ ) in a large analysis of 1,872 patients who underwent CCTA.<sup>41</sup> Quantitative analysis of peri-coronary fat may also facilitate the identification of vulnerable plaques and vulnerable patients during ACS presentation.<sup>42,43</sup>

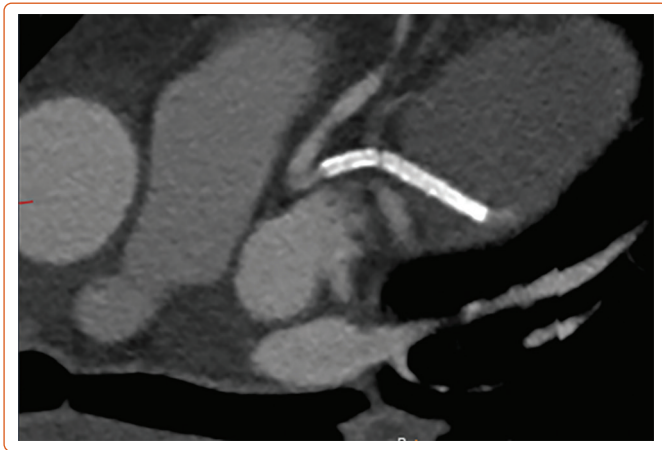
### Role of CCTA for Evaluation of Coronary Stents, Bypass Grafts and for PCI Planning

Advances in CT technology have improved spatial resolution and now enable evaluation of the patency of some coronary stents. A meta-analysis of 35 studies reporting on 4,131 stents showed that the pooled positive likelihood ratio was 14.0 and the pooled negative likelihood ratio was 0.10 for diagnosis of in-stent restenosis of  $\geq 50\%$ .<sup>44</sup> The 2021 SCCT expert consensus document on CCTA concluded that it is appropriate to use CCTA to evaluate stents ( $\geq 3.0$  mm in diameter) using special imaging protocols for image optimization, and it may be appropriate to image smaller stents ( $< 3.0$  mm in diameter) with known thin struts ( $< 100 \mu\text{m}$ ) in proximal vessels.<sup>45</sup> The data surrounding the use of CCTA for the identification of in-stent thrombosis are limited. In-stent thrombosis is more conventionally diagnosed via ICA, IVUS and OCT. A 2011 study compared the performance of 64-slice CCTA and OCT for diagnosis of stent thrombosis in 79 patients who presented at a mean interval of 24 hours after the onset of acute chest pain within a month of the initial coronary event.<sup>46</sup> CCTA was found to have a sensitivity of 95%, specificity of 93%, PPV of 83% and NPV of 98%. Although these data are limited to a small population of patients, the study serves as a promising proof of concept for the use of CCTA in this population. CCTA also enables evaluation of stent morphology and identification of the stent fracture non-invasively (Figure 4).

CCTA allows fairly accurate evaluation of CABG. Because grafts are typically larger than and subject to less motion artifact than native coronary arteries, CCTA is particularly useful in this population.<sup>45</sup> A 2016 meta-analysis of 12 studies using a 64-detector CCTA protocol involving 959 patients demonstrated the high sensitivity (98%), specificity (98%) and discrimination (area under the receiver operating characteristic curve 0.99) of stenosis  $> 50\%$ , compared with ICA, regardless of conduit type



**Figure 4: Coronary CT Angiography Showing a Stent Fracture in a Patient Presenting with Chest Pain and Abnormal Stress Test**



(venous versus arterial).<sup>47</sup> Evaluation of native coronary stenosis remains challenging in patients with prior CABG due to advanced atherosclerosis, often with diffuse calcification limiting luminal stenosis. Thus, CCTA for the evaluation of CABG patency may be most helpful in patients with known occluded native coronaries.

CCTA may also be helpful in procedure planning in patients with chronic total occlusions (CTOs) undergoing PCI. CCTA has the ability to

demonstrate the course of the distal segment of occluded and large collateral vessels, which can offer a roadmap for interventions and may reduce procedure time. CCTA can additionally identify various coronary features that may be predictive of revascularization success and long-term outcomes, and identify myocardial coronary territory.<sup>48</sup>

### Conclusion

CCTA is a versatile imaging modality that can play an appropriate role for coronary artery evaluation in several clinical settings. In the stable chest pain patient, it offers superior sensitivity to other non-invasive functional imaging modalities, leading to higher rates of statin and aspirin prescription rates. In low- to intermediate-risk patients with acute chest pain, it is not only safe, but potentially allows for reduced costs and LOS, and the diagnosis of non-coronary causes of acute, life-threatening chest pain that may otherwise be missed. The role of CCTA in higher-risk patients (such as those with confirmed NSTEMI) is evolving and it may provide a safe means of identifying patients without obstructive disease, for whom medical therapy may be sufficient. CCTA can also aid in plaque characterization, which can facilitate personalized therapeutic interventions and distinguish culprit from non-culprit lesions, or even non-atheromatous causes of ACS. CCTA also provides novel prognostic information with its ability to non-invasively derive information regarding plaque morphology and PCAT. Finally, it can also play an important role in evaluating prior coronary stents and CABG, and in the planning for PCI. The world of CCTA continues to expand with the development of new technologies (such as FFR<sub>CT</sub>), which will enhance the diagnostic abilities of CCTA and improve its specificity to identify hemodynamically significant stenoses. □

- Moss AJ, Williams MC, Newby DE, Nicol ED. The updated NICE guidelines: cardiac CT as the first-line test for coronary artery disease. *Curr Cardiovasc Imaging Rep* 2017;10:15. <https://doi.org/10.1007/s12410-017-9412-6>; PMID: 28446943.
- Owens PL, Barrett ML, Gibson TB, et al. Emergency department care in the United States: a profile of national data sources. *Ann Emerg Med* 2010;56:150–65. <https://doi.org/10.1016/j.annemergmed.2009.11.022>; PMID: 20074834.
- Knuuti J, Wijns W, Saraste A, et al. 2019 ESC guidelines for the diagnosis and management of chronic coronary syndromes. *Eur Heart J* 2020;41:407–77. <https://doi.org/10.1093/eurheartj/ehz425>; PMID: 31504439.
- Gulati M, Levy PD, Mukherjee D, et al. AHA/ACC/ASE/CHEST/SAEM/SCCT/SCMR guideline for the evaluation and diagnosis of chest pain: a report of the American College of Cardiology/American Heart Association joint committee on clinical practice guidelines. *Circulation* 2021;144:e368–454. <https://doi.org/10.1161/CIR.0000000000001029>; PMID: 34709879.
- Abdelrahman KM, Chen MY, Dey AK, et al. Coronary computed tomography angiography from clinical uses to emerging technologies: JACC state-of-the-art review. *J Am Coll Cardiol* 2020;76:1226–43. <https://doi.org/10.1016/j.jacc.2020.06.076>; PMID: 32883417.
- Ghekiere O, Salgado R, Buls N, et al. Image quality in coronary CT angiography: challenges and technical solutions. *Br J Radiol* 2017;90:20160567. <https://doi.org/10.1259/bjr.20160567>; PMID: 28055253.
- Hwang IC, Choi SJ, Choi JE, et al. Comparison of mid- to long-term clinical outcomes between anatomical testing and usual care in patients with suspected coronary artery disease: a meta-analysis of randomized trials. *Clin Cardiol* 2017;40:1129–38. <https://doi.org/10.1002/clc.22799>; PMID: 28914973.
- Patel MR, Peterson ED, Dai D, et al. Low diagnostic yield of elective coronary angiography. *N Engl J Med* 2010;362:886–95. <https://doi.org/10.1056/NEJMoa0907272>; PMID: 20220183.
- Goldstein JA, Gallagher MJ, O'Neill WW, et al. A randomized controlled trial of multi-slice coronary computed tomography for evaluation of acute chest pain. *J Am Coll Cardiol* 2007;49:863–71. <https://doi.org/10.1016/j.jacc.2006.08.064>; PMID: 17320744.
- Goldstein JA, Chinnaiyan KM, Abidov A, et al. The CT-STAT (Coronary Computed Tomographic Angiography for Systematic Triage of Acute Chest Pain Patients to Treatment) trial. *J Am Coll Cardiol* 2011;58:1414–22. <https://doi.org/10.1016/j.jacc.2011.03.068>; PMID: 21939822.
- Litt HI, Gatsonis C, Snyder B, et al. CT angiography for safe discharge of patients with possible acute coronary syndromes. *N Engl J Med* 2012;366:1393–403. <https://doi.org/10.1056/NEJMoa1201163>; PMID: 22449295.
- Hoffmann U, Truong QA, Schoenfeld DA, et al. Coronary CT angiography versus standard evaluation in acute chest pain. *N Engl J Med* 2012;367:299–308. <https://doi.org/10.1056/NEJMoa1201161>; PMID: 22830462.
- Hamilton-Craig C, Fifoot A, Hansen M, et al. Diagnostic performance and cost of CT angiography versus stress ECG: a randomized prospective study of suspected acute coronary syndrome chest pain in the emergency department (CT-Compare). *Int J Cardiol* 2014;177:867–73. <https://doi.org/10.1016/j.ijcard.2014.10.090>; PMID: 25466568.
- Linde JJ, Hove JD, Sørgaard M, et al. Long-term clinical impact of coronary CT angiography in patients with recent acute-onset chest pain: the randomized controlled CATCH trial. *JACC Cardiovasc Imaging* 2015;8:1404–13. <https://doi.org/10.1016/j.jcmg.2015.07.015>; PMID: 26577263.
- Levsky JM, Spevack DM, Travin MI, et al. Coronary computed tomography angiography versus radionuclide myocardial perfusion imaging in patients with chest pain admitted to telemetry: a randomized trial. *Ann Intern Med* 2015;163:174–83. <https://doi.org/10.7326/M14-2948>; PMID: 26052677.
- Dedic A, Lubbers MM, Schaap J, et al. Coronary CT angiography for suspected ACS in the era of high-sensitivity troponins: randomized multicenter study. *J Am Coll Cardiol* 2016;67:16–26. <https://doi.org/10.1016/j.jacc.2015.10.045>; PMID: 26764061.
- Sørgaard MH, Linde JJ, Kühl JT, et al. Value of myocardial perfusion assessment with coronary computed tomography angiography in patients with recent acute-onset chest pain. *JACC Cardiovasc Imaging* 2018;11:1611–21. <https://doi.org/10.1016/j.jcmg.2017.09.022>; PMID: 29248654.
- Gray AJ, Roobottom C, Smith JE, et al. Early computed tomography coronary angiography in patients with suspected acute coronary syndrome: randomised controlled trial. *BMJ* 2021;374:n2106. <https://doi.org/10.1136/bmj.n2106>; PMID: 34588162.
- Hulten E, Pickett C, Bittencourt MS, et al. Outcomes after coronary computed tomography angiography in the emergency department: a systematic review and meta-analysis of randomized, controlled trials. *J Am Coll Cardiol* 2013;61:880–92. <https://doi.org/10.1016/j.jacc.2012.11.061>; PMID: 23395069.
- Iannaccone M, Gili S, De Filippo O, et al. Diagnostic accuracy of functional, imaging and biochemical tests for patients presenting with chest pain to the emergency department: a systematic review and meta-analysis. *Eur Heart J Acute Cardiovasc Care* 2019;8:412–20. <https://doi.org/10.1177/2048872617754275>; PMID: 29350536.
- Goehler A, Mayrhofer T, Pursnani A, et al. Long-term health outcomes and cost-effectiveness of coronary CT angiography in patients with suspicion for acute coronary syndrome. *J Cardiovasc Comput Tomogr* 2020;14:44–54. <https://doi.org/10.1016/j.jcct.2019.06.008>; PMID: 31303580.
- Ferencik M, Lu MT, Mayrhofer T, et al. Non-invasive fractional flow reserve derived from coronary computed tomography angiography in patients with acute chest pain: subgroup analysis of the ROMICAT II trial. *J Cardiovasc Comput Tomogr* 2019;13:196–202. <https://doi.org/10.1016/j.jcct.2019.05.009>; PMID: 3113728.
- Chinnaiyan KM, Safian RD, Gallagher ML, et al. Clinical use of CT-derived fractional flow reserve in the emergency department. *JACC Cardiovasc Imaging* 2020;13:452–61. <https://doi.org/10.1016/j.jcmg.2019.05.025>; PMID: 31326487.
- Meier D, Skaliadis I, De Bruyne B, et al. Ability of FFR-CT to detect the absence of hemodynamically significant lesions in patients with high-risk NSTEMI-ACS admitted in the emergency department with chest pain: study design and rationale. *Int J Cardiol Heart Vasc* 2020;27:100496. <https://doi.org/10.1016/j.ijcha.2020.100496>; PMID: 32181323.
- Burris AC 2nd, Boura JA, Raff GL, Chinnaiyan KM. Triple rule out versus coronary CT angiography in patients with acute chest pain: results from the ACIC Consortium. *JACC Cardiovasc Imaging* 2015;8:817–25. <https://doi.org/10.1016/j.jcmg.2015.02.023>; PMID: 26093928.
- Kumar V, Veerakoon S, Dey AK, et al. The evolving role of coronary CT angiography in acute coronary syndromes. *J Cardiovasc Comput Tomogr* 2021;15:384–93. <https://doi.org/10.1016/j.jcct.2021.02.002>; PMID: 33858808.
- Yoo SM, Jang S, Kim JA, Chun EJ. Troponin-positive non-obstructive coronary arteries and myocardial infarction with non-obstructive coronary arteries: definition, etiologies, and role of CT and MR imaging. *Korean J Radiol* 2020;21:1305–16. <https://doi.org/10.3348/kjr.2020.0064>; PMID: 32783414.
- Collet JP, Thiele H, Barbato E, et al. 2020 ESC guidelines for the management of acute coronary syndromes in patients presenting without persistent ST-segment elevation. *Eur Heart J* 2021;42:1289–367. <https://doi.org/10.1093/eurheartj/ehaa575>; PMID: 32860058.
- Linde JJ, Kelbæk H, Hansen TF, et al. Coronary CT

- angiography in patients with non-ST-segment elevation acute coronary syndrome. *J Am Coll Cardiol* 2020;75:453–63. <https://doi.org/10.1016/j.jacc.2019.12.012>; PMID: 32029126.
30. Gray AJ, Roobottom C, Smith JE, et al. Rapid assessment of potential ischaemic heart disease with CTCA: the Rapid-CTCA Trial. A randomised trial of CTCA in the evaluation, intervention and outcome of adults with suspected or confirmed acute coronary syndrome presenting to the emergency department. Presented at: American Heart Association Scientific Sessions 2020, 16 November 2020. Abstract 18629.
  31. Gray AJ, Roobottom C, Smith JE, et al. Randomised controlled trial of early CT coronary angiography in patients with suspected acute coronary syndrome. 2020. [https://papers.ssrn.com/sol3/papers.cfm?Abstract\\_id=3745131](https://papers.ssrn.com/sol3/papers.cfm?Abstract_id=3745131) (accessed 11 February 2022); preprint.
  32. Kofoed KF, Engstrom T, Sigvardsen PE, et al. Prognostic value of coronary CT angiography in patients with non-ST-segment elevation acute coronary syndromes. *J Am Coll Cardiol* 2021;77:1044–52. <https://doi.org/10.1016/j.jacc.2020.12.037>; PMID: 33632478.
  33. Kitagawa T, Yamamoto H, Horiguchi J, et al. Characterization of noncalcified coronary plaques and identification of culprit lesions in patients with acute coronary syndrome by 64-slice computed tomography. *JACC Cardiovasc Imaging* 2009;2:153–60. <https://doi.org/10.1016/j.jcmg.2008.09.015>; PMID: 19356549.
  34. Hoffmann U, Moselewski F, Nieman K, et al. Noninvasive assessment of plaque morphology and composition in culprit and stable lesions in acute coronary syndrome and stable lesions in stable angina by multidetector computed tomography. *J Am Coll Cardiol* 2006;47:1655–62. <https://doi.org/10.1016/j.jacc.2006.01.041>; PMID: 16631006.
  35. Singh V, Choi AD, Leipsic J, et al. Use of cardiac CT amidst the COVID-19 pandemic and beyond: North American perspective. *J Cardiovasc Comput Tomogr* 2021;15:16–26. <https://doi.org/10.1016/j.jcct.2020.11.004>; PMID: 33248903.
  36. Duguay TM, Tesche C, Vliegenthart R, et al. Coronary computed tomographic angiography-derived fractional flow reserve based on machine learning for risk stratification of non-culprit coronary narrowings in patients with acute coronary syndrome. *Am J Cardiol* 2017;120:1260–6. <https://doi.org/10.1016/j.amjcard.2017.07.008>; PMID: 28844517.
  37. Tweet MS, Gulati R, Williamson EE, et al. Multimodality imaging for spontaneous coronary artery dissection in women. *JACC Cardiovasc Imaging* 2016;9:436–50. <https://doi.org/10.1016/j.jcmg.2016.01.009>; PMID: 27056163.
  38. Bittner DO, Mayrhofer T, Puchner SB, et al. Coronary computed tomography angiography-specific definitions of high-risk plaque features improve detection of acute coronary syndrome. *Circ Cardiovasc Imaging* 2018;11:e007657. <https://doi.org/10.1161/CIRCIMAGING.118.007657>; PMID: 30354493.
  39. Williams MC, Moss AJ, Dweck M, et al. Coronary artery plaque characteristics associated with adverse outcomes in the SCOT-HEART study. *J Am Coll Cardiol* 2019;73:291–301. <https://doi.org/10.1016/j.jacc.2018.10.066>; PMID: 30678759.
  40. Antonopoulos AS, Sanna F, Sabharwal N, et al. Detecting human coronary inflammation by imaging perivascular fat. *Sci Transl Med* 2017;9:eaal2658. <https://doi.org/10.1126/scitranslmed.aal2658>; PMID: 28701474.
  41. Oikonomou EK, Marwan M, Desai MY, et al. Non-invasive detection of coronary inflammation using computed tomography and prediction of residual cardiovascular risk (the CRISP CT study): a post-hoc analysis of prospective outcome data. *Lancet* 2018;392:929–39. [https://doi.org/10.1016/S0140-6736\(18\)31114-0](https://doi.org/10.1016/S0140-6736(18)31114-0); PMID: 30170852.
  42. Lin A, Kolossvary M, Yuvaraj J, et al. Myocardial infarction associates with a distinct pericoronary adipose tissue radiomic phenotype: a prospective case-control study. *JACC Cardiovasc Imaging* 2020;13:2371–83. <https://doi.org/10.1016/j.jcmg.2020.06.033>; PMID: 32861654.
  43. Goeller M, Achenbach S, Cadet S, et al. Pericoronary adipose tissue computed tomography attenuation and high-risk plaque characteristics in acute coronary syndrome compared with stable coronary artery disease. *JAMA Cardiol* 2018;3:858–63. <https://doi.org/10.1001/jamacardio.2018.1997>; PMID: 30027285.
  44. Dai T, Wang JR, Hu PF. Diagnostic performance of computed tomography angiography in the detection of coronary artery in-stent restenosis: evidence from an updated meta-analysis. *Eur Radiol* 2018;28:1373–82. <https://doi.org/10.1007/s00330-017-5097-0>; PMID: 29124384.
  45. Narula J, Chandrasekhar Y, Ahmadi A, et al. SCCT 2021 expert consensus document on coronary computed tomographic angiography: a report of the Society of Cardiovascular Computed Tomography. *J Cardiovasc Comput Tomogr* 2021;15:192–217. <https://doi.org/10.1016/j.jcct.2020.11.001>; PMID: 33303384.
  46. Kubo T, Matsuo Y, Ino Y, et al. Diagnostic accuracy of CT angiography to assess coronary stent thrombosis as determined by intravascular OCT. *JACC Cardiovasc Imaging* 2011;4:1040–3. <https://doi.org/10.1016/j.jcmg.2011.02.024>; PMID: 21920343.
  47. Barbero U, Iannaccone M, d'Ascenzo F, et al. 64 slice-coronary computed tomography sensitivity and specificity in the evaluation of coronary artery bypass graft stenosis: a meta-analysis. *Int J Cardiol* 2016;216:52–7. <https://doi.org/10.1016/j.ijcard.2016.04.156>; PMID: 27140337.
  48. Velagapudi P, Abbott JD, Mamas M, et al. Role of coronary computed tomography angiography in percutaneous coronary intervention of chronic total occlusions. *Curr Cardiovasc Imaging Rep* 2020;13:20. <https://doi.org/10.1007/s12410-020-09541-3>.
  49. Hollander JE, Gatsonis C, Greco EM, et al. Coronary computed tomography angiography versus traditional care: comparison of one-year outcomes and resource use. *Ann Emerg Med* 2016;67:460–8.e1. <https://doi.org/10.1016/j.annemergmed.2015.09.014>; PMID: 26507904.
  50. Uretsky S, Argulian E, Supariwala A, et al. Comparative effectiveness of coronary CT angiography vs stress cardiac imaging in patients following hospital admission for chest pain work-up: the Prospective First Evaluation in Chest Pain (PERFECT) trial. *J Nucl Cardiol* 2017;24:1267–78. <https://doi.org/10.1007/s12350-015-0354-6>; PMID: 27048306.
  51. Douglas PS, Hoffmann U, Patel MR, et al. Outcomes of anatomical versus functional testing for coronary artery disease. *N Engl J Med* 2015;372:1291–300. <https://doi.org/10.1056/NEJMoa1415516>; PMID: 25773919.
  52. McKavanagh P, Lusk L, Ball PA, et al. A comparison of cardiac computerized tomography and exercise stress electrocardiogram test for the investigation of stable chest pain: the clinical results of the CAPP randomized prospective trial. *Eur Heart J Cardiovasc Imaging* 2015;16:441–8. <https://doi.org/10.1093/ehjci/jeu284>; PMID: 25473041.
  53. SCOT-HEART investigators. CT coronary angiography in patients with suspected angina due to coronary heart disease (SCOT-HEART): an open-label, parallel-group, multicentre trial. *Lancet* 2015;385:2383–91. [https://doi.org/10.1016/S0140-6736\(15\)00291-4](https://doi.org/10.1016/S0140-6736(15)00291-4); PMID: 25788230.
  54. Lubbers M, Dedic A, Coenen A, et al. Calcium imaging and selective computed tomography angiography in comparison to functional testing for suspected coronary artery disease: the multicentre, randomized CRESCENT trial. *Eur Heart J* 2016;37:1232–43. <https://doi.org/10.1093/eurheartj/ehv700>; PMID: 26746631.
  55. Taylor AJ, Cerqueira M, Hodgson JM, et al. ACCF/SCCT/ACR/AHA/ASE/ASNC/ NASCI/SCAI/SCMR 2010 appropriate use criteria for cardiac computed tomography. A report of the American College of Cardiology Foundation appropriate use criteria task force. *J Am Coll Cardiol* 2010;56:1864–94. <https://doi.org/10.1016/j.jacc.2010.07.005>; PMID: 21087721.
  56. ASCI Practice Guideline Working Group, Beck KS, Kim JA, et al. 2017 multimodality appropriate use criteria for noninvasive cardiac imaging: expert consensus of the Asian Society of Cardiovascular Imaging. *Korean J Radiol* 2017;18:871–80. <https://doi.org/10.3348/kjr.201718.6.871>; PMID: 29089819.
  57. Raff GL, Chinnaiyan KM, Cury RC, et al. SCCT guidelines on the use of coronary computed tomographic angiography for patients presenting with acute chest pain to the emergency department: a report of the Society of Cardiovascular Computed Tomography guidelines committee. *J Cardiovasc Comput Tomogr* 2014;8:254–71. <https://doi.org/10.1016/j.jcct.2014.06.002>; PMID: 25151918.