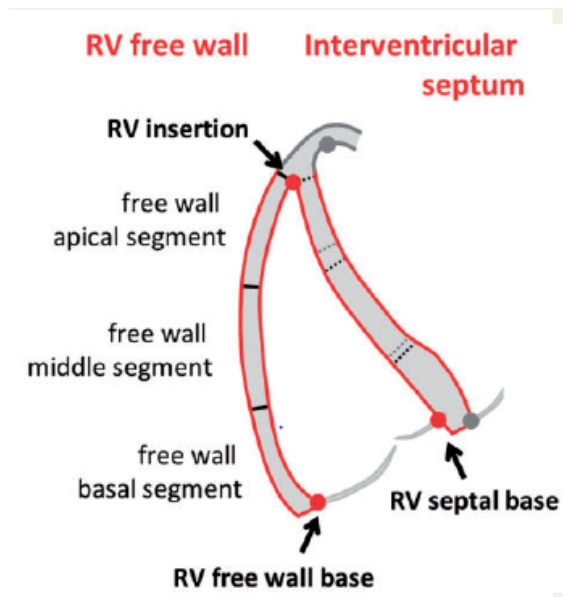
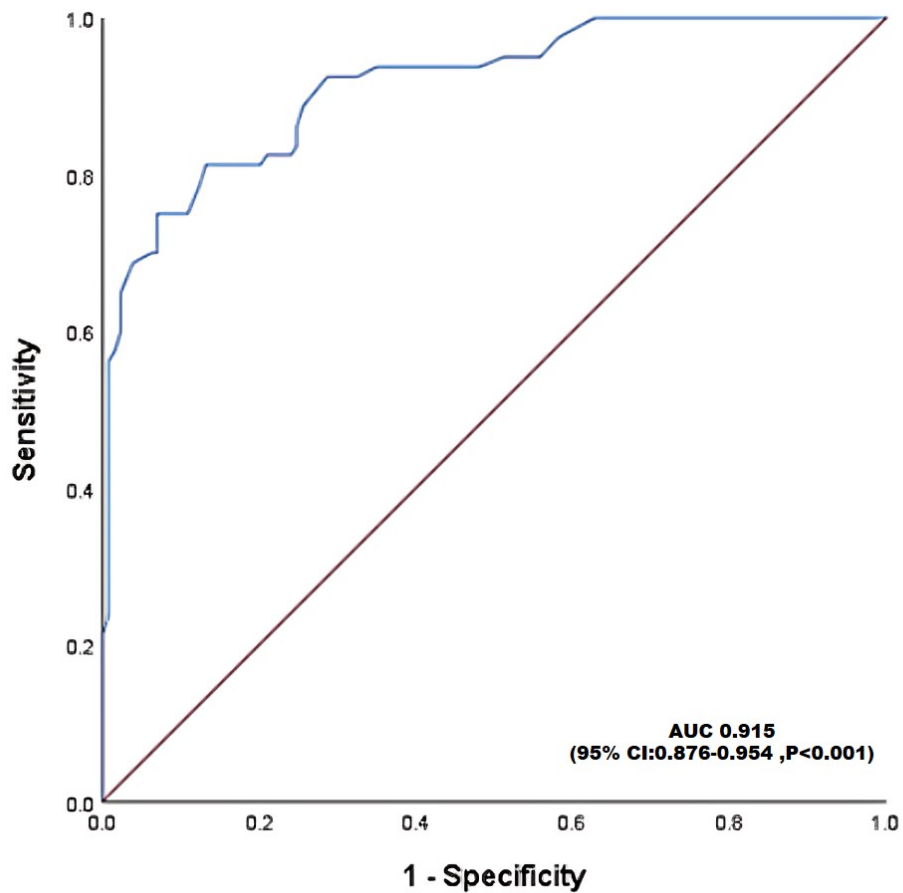


## SUPPLEMENTARY FILES

Supplementary image 1: RV fwLs calculated from an average of 3 segments from the free wall in RV focused view



Supplementary image 2 : ROC curve for RVfwLs



**Supplementary table 1 - Data of pilot study conducted in 75 normal subjects**

Age ,years (mean $\pm$ SD)	51.84 $\pm$ 11.16
Range ,years	26-77
Age , number (%)	
$\leq$ 40 years	11(14.7)
41-50 years	27(36)
51-60 years	21(28)
61-70 years	12(16)
$>$ 70 years	4(5.3)
Sex-number (%)	
Male	34(45.3)
Female	41(54.7)
BMI-kg/m <sup>2</sup> (mean $\pm$ SD)	23.44 $\pm$ 3.54
Median(IQR)	22.90(20.55-25.70)
Range, kg/m <sup>2</sup>	18.5-32.50
Blood pressure, mm Hg (mean $\pm$ SD)	118.64 $\pm$ 12 / 80.96 $\pm$ 6.18
Heart rate-beats per minute(mean $\pm$ SD)	72.10 $\pm$ 10.89
EF-% (mean $\pm$ SD)	64.46 $\pm$ 7.21
Range,%	54-82
FAC-% (mean $\pm$ SD)	51.15 $\pm$ 7.71
Range,%	35.28 - 66
TAPSE ,mm (mean $\pm$ SD)	20.56 $\pm$ 1.89
Range, mm	17-25
S` (TDI-pulse),cm/s(mean $\pm$ SD)	12.53 $\pm$ 1.74
Range, cm/s	8 - 17
S` (TDI-colour ),cm/s(mean $\pm$ SD)	9.78 $\pm$ 1.57
Range, cm/s	6.18-14.24
Free wall RV LS, % (mean $\pm$ SD)	-26.63 $\pm$ 5.06
Range,%	-20.10 $\rightarrow$ -38.30
RV global LS, % (mean $\pm$ SD)	-24.29 $\pm$ 3.22
Range,%	-15.40 $\rightarrow$ -33.70)

**Supplementary Table 2: Factors associated with right ventricular free wall longitudinal strain-multivariate analysis-logistic regression**

	<b>P value</b>	<b>OR</b>
<b>Wall involved-IW+RV+PW</b>	0.994	1.07(0.87-1.74)
<b>Ejection fraction-mild dysfunction</b>	0.165	4.48(0.88-8.94)
<b>CAG-vessel involved-RCA+LCX+LAD</b>	0.252	2.15(0.58-8.01)
<b>Target lesion revascularisation</b>	0.839	1.29(0.65-1.45)
<b>Arrhythmias*</b>	0.046	2.05(0.93-8.10)
<b>Re-infarction</b>	0.755	1(0.96-1.05)
<b>Heart failure *</b>	0.035	3.64(1.35-11.53)
<b>Prolonged hospital stay</b>	0.984	1.02(0.79-1.38)