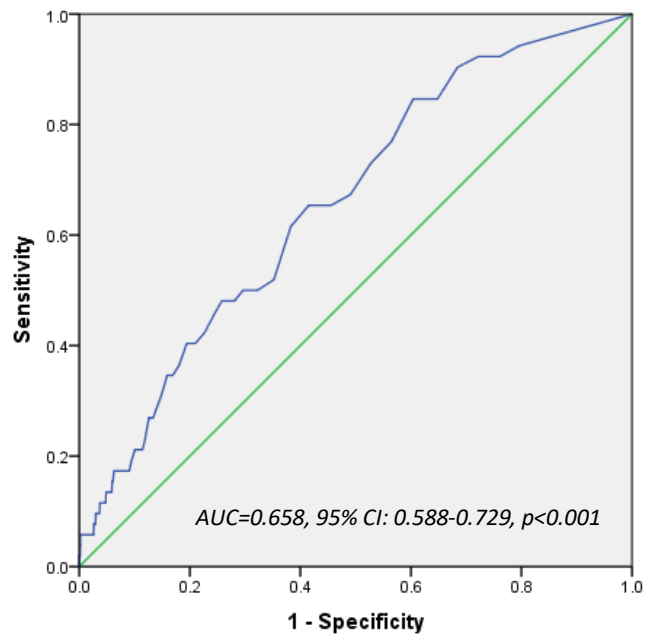


Supplementary Material

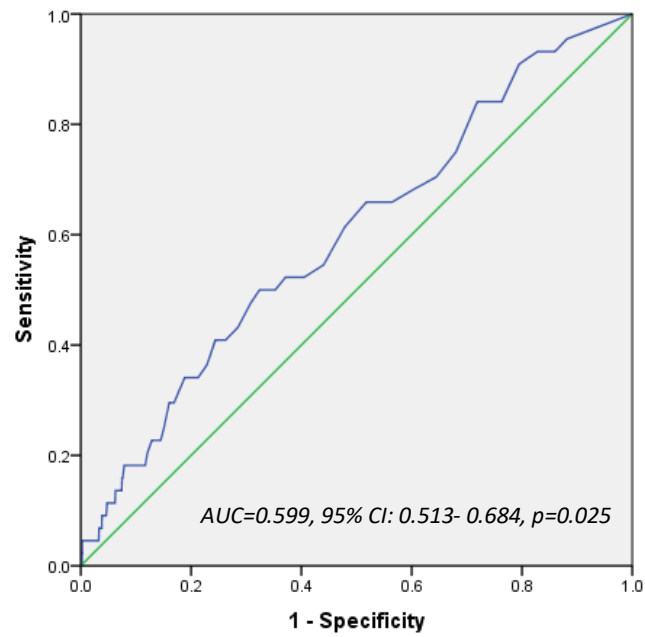
Supplementary Table 1. Cardiovascular risk classification by Thai CV risk score.¹

Risk level	
Low risk	<7.5%
Intermediate risk	7.5–20%
High risk	>20%

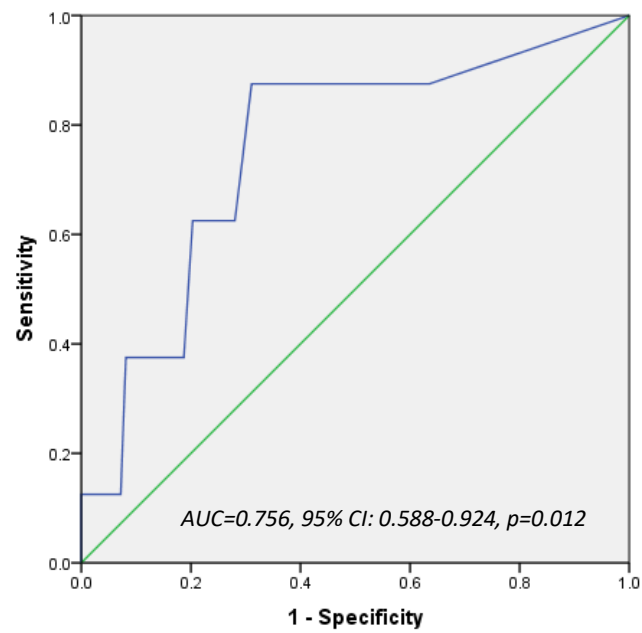
Supplementary Figure 1. ROC for high-sensitivity troponin I to predict major cardiovascular events.



Supplementary Figure 2. ROC for high-sensitivity troponin I to predict major cardiovascular events in men.



Supplementary Figure 3. ROC for high-sensitivity troponin I to predict major cardiovascular events in women.



Supplementary Table 2. Cause of death.

Causes	Incidence, n (%)
Cardiovascular death	8 (13.3)
Cerebrovascular death	5 (8.3)
Cancer	31 (51.7)
Other chronic illness	8 (13.3)
Other causes	8 (13.3)

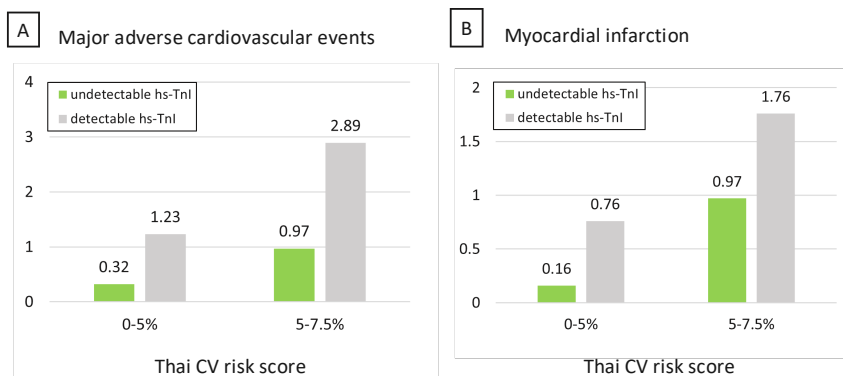
Supplementary Table 3. Hazard ratio demonstrated factors associated with major adverse cardiac events.

Factors	Unadjusted HR	p-value	Adjusted HR	p-value
hs-TnI (ng/L)	1.03 (1.02–1.04)	<0.001	1.03 (1.02–1.04)	<0.001
Age	1.06 (1.02–1.10)	0.005		
Male (%)	3.02 (1.42–6.42)	0.004		
SBP (mmHg)	1.03 (1.00–1.05)	0.013		
Waist (cm)	1.04 (1.01–1.07)	0.002		
BMI (kg/m ²)	1.07 (1.00–1.15)	0.033		
Current smoking	0.74 (0.29–1.87)	0.526		
Diabetes	2.58 (0.63–10.60)	0.189		
Total cholesterol (mmol/l)	1.004 (0.997–1.011)	0.283		
LDL (mmol/l)	1.003 (0.996–1.011)	0.367		
HDL (mmol/l)	0.971 (0.947–0.995)	0.018		
TG (mmol/l)	1.003 (1.001–1.005)	0.004		
GFR (ml/1.73 m ² /min)	0.98 (0.97–1.00)	0.046		

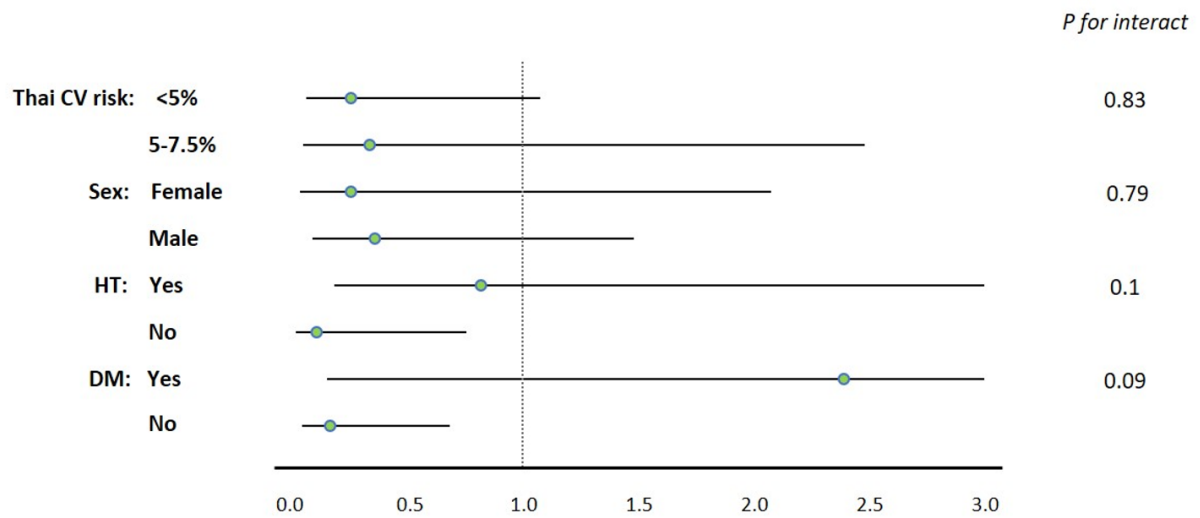
Supplementary Table 4: Factors associated with undetectable hs-Tnl.

Factors	RR	p-value
Female	4.30 (3.61–5.12)	<0.001
Age <35 years old	1.29 (1.02–1.62)	0.032
Waist <80 cm	2.68 (2.26–3.19)	<0.001
BMI <27 kg/m ²	1.80 (1.40–2.31)	<0.001
SBP <120 mmHg	2.08 (1.73–2.51)	<0.001
DBP <90 mmHg	1.49 (1.13–1.96)	0.005
Non-current smoker	1.27 (0.97–1.65)	0.080
Non-DM	0.61 (0.34–1.10)	0.102
HDL ≥ 1 mmol/l	1.41 (1.09–1.84)	0.009
LDL <3.4 mmol/l	3.16 (2.66–3.75)	<0.001
TG <1.7 mmol/l	1.49 (1.22–1.82)	<0.001

Supplementary Figure 5: Incident rate of major adverse cardiovascular events (MACE) and myocardial infarction per 1000 person-years by Thai cardiovascular risk score and hs-Tnl status



Supplementary Figure 4: Subgroup analysis of undetectable hs-Tnl and incidence of MACE.



Subgroup analysis of undetected hs-Tnl and incidence of MACE.

References

1. Mahidol University. Thai CV Risk Score. 2024. https://www.rama.mahidol.ac.th/cardio_vascular_risk/thai_cv_risk_score/tcvrs_en.html (accessed 17 August 2023).