

## Supplementary material

Table-4: Aortic Atherosclerosis and left atrial appendage thrombus in overall population

Table-4: Aortic Atherosclerosis and left atrial appendage thrombus in overall population

Table-3 Baseline characteristics of patients with CHA<sub>2</sub>DS<sub>2</sub>VASc < 1

| <b>Variables</b><br><b>N (%)</b>                | <b>All patients</b><br><b>N=249</b><br><b>(42%)</b> | <b>LAA</b><br><b>Thrombus</b><br><b>N=13</b> | <b>No LAA</b><br><b>thrombus</b><br><b>N=236</b> | <b>P-</b><br><b>value</b> |
|---|---|--|--|---------------------------|
| <b>Age Years (Median, IQR)</b>                  | 65 (56-72)  | 69 (59-76)                                   | 65 (56-72)                                       | 0.027                     |
| <b>&lt; 65 Years</b>                            | 197 (79)  | 11 (85)                                      | 186 (79)   | 1.000*                    |
| <b>65-76 Years</b>                              | 46 (18)   | 2 (15)                                       | 44 (19)  |                           |
| <b>&gt;75 Years</b>                             | 6 (2)   | 0  | 6 (3)  |                           |
| <b>Age ≥65</b>                                  | 37 (15)   | 2 (15)                                       | 35 (15)  | 1.000*                    |
| <b>Gender</b>                                   |   |  |  | 0.418*                    |
| <b>Male</b>                                     | 212 (85)  | 10 (77)                                      | 202 (86)   |                           |
| <b>Female</b>                                   | 37 (15)   | 3 (23)                                       | 24 (14)  |                           |
| <b>Spontaneous Echo Contrast</b>                | 57 (23.8)   | 9 (69.2)                                     | 48 (21.1)  | <0.001                    |
| <b>Electrophysiological</b><br><b>Procedure</b> |   |  |  | 0.177                     |
| <b>AFL Ablation</b>                             | 58 (23.5)   | 5 (38.5)                                     | 53 (22.6)  |                           |
| <b>AF Ablation</b>                              | 155 (62.8)  | 5 (38.5)                                     | 150 (64.1)                                       |                           |
| <b>Baseline Rhythm</b>                          | 34 (13.8)   | 3 (23.1)                                     | 31 (13.2)  | 0.071*                    |
| <b>AFL</b>                                      | 65 (26.1)   | 5 (38.5)                                     | 60 (25.4)  |                           |
| <b>Paroxysmal AF</b>                            | 144 (57.8)  | 4 (30.8)                                     | 140 (59.3)                                       |                           |
| <b>Persistent AF</b>                            | 40 (16.1)   | 4 (30.8)                                     | 36 (15.3)  |                           |
| <b>Rhythm on Day of TEE</b>                     |   |  |  | 0.486 *                   |
| <b>Sinus Rhythm</b>                             | 58 (32.6)   | 2 (16.7)                                     | 56 (33.7)  |                           |
| <b>AFL</b>                                      | 47 (26.4)   | 4 (33.3)                                     | 43 (25.9)  |                           |
| <b>AF</b>                                       | 73 (41.0)   | 6 (50.0)                                     | 67 (40.4)  |                           |
| <b>KATZ Grade ≥ 2</b>                           | 1146 (58.6)   | 11 (84.6)                                    | 135 (57.2)                                       | 0.051                     |
| <b>KATZ Grade ≥3</b>                            | 55 (22.1)   | 8 (61.5)                                     | 47 (19.2)  | 0.002 *                   |
| <b>ASE Atherosclerosis Grade ≥ 2</b>            | 1144 (57.8)   | 111 (84.6)                                   | 133 (56.4)                                       | 0.045                     |

|  |              |               |            |            |
|--|--------------|---------------|------------|------------|
| <b>Ferrari et al Score <math>\geq 2</math></b>     | 38 (15.3)    | 6 (46.2)      | 32 (13.6)  | 0.007      |
| <b>Hypertension</b>                                | 28 (12.1)    | 2 (16.7)      | 26 (11.8)  | 0.643*     |
| <b>Diabetes Mellitus</b>                           | 2 (0.8)      | 0             | 2 (0.9)    | 1.000*     |
| <b>Heart Failure</b>                               | 15 (6.3)     | 2 (16.7)      | 13 (5.7)   | 0.168*     |
| <b>History of Stroke/Transient Ischemic Attack</b> | NA           | NA            | NA         | NA         |
| <b>Vascular Disease</b>                            | 9 (3.8)      | 1 (8.3)       | 8 (3.5)    | 0.376*     |
| <b>Valvular Disease**</b>                          | 10 (5.3)     | 3 (33.3)      | 7 (3.8)    | 0.007*     |
| <b>LVEF</b>  |              |               |            | 0.411*     |
| $\leq 50\%$  | 35 (17.5)    | 3 (27.3)      | 32 (16.9)  |            |
| $>50\%$  | 165 (82.5)   | 8 (72.7)      | 157 (83.1) |            |
| <b>Anticoagulant/antiplatelet</b>                  |              |               |            | $<0.001^*$ |
| <b>Warfarin</b>                                    | 32 (13.4)    | 7 (53.8)      | 25 (11.1)  |            |
| <b>Apixaban</b>                                    | 73 (30.5)    | 1 (7.7)       | 72 (31.9)  |            |
| <b>Rivaroxaban</b>                                 | 55 (23.0)    | 3 (23.1)      | 52 (23.0)  |            |
| <b>LA Size (Median, IQR)</b>                       | 43(39-48.25) | 50 (43.25-54) | 43 (38-48) | $<0.001$   |
| <b>CHA<sub>2</sub>DS<sub>2</sub>VASc</b>           |              |               |            | 0.081      |
| <b>0</b>   | 116 (46.6)   | 3 (23.1)      | 113 (47.9) |            |
| <b>1</b>   | 133 (53.4)   | 10 (76.9)     | 123 (52.1) |            |

\* Fisher`s exact test

\*\* Missing values 57 (22.9%)

Table-4: Aortic Atherosclerosis and left atrial appendage thrombus in overall population

| AA grade | Unadjusted OR (95%CI) | p-value | Adjusted OR (95%CI) | p-value |
|----------|-----------------------|---------|---------------------|---------|
| ASE      | 1.17 (0.90-1.53)      | 0.24    | 0.89 (0.65-1.25)    | 0.52    |
| Katz     | 1.39 (1.06-1.81)      | 0.02    | 1.11 (0.81-1.53)    | 0.51    |

|         |                  |      |                  |      |
|---------|------------------|------|------------------|------|
| Ferrari | 1.43 (0.85-2.43) | 0.18 | 0.99 (0.52-1.89) | 0.99 |
|---------|------------------|------|------------------|------|

## Figures

1. Figure 2: The distribution of the presence of LAAT based on the CHA<sub>2</sub>DS<sub>2</sub> VASc score
2. Figure 3: Distribution of the presence of LAAT according to the KATZ score
3. Figure 4 ROC curve of KATZ score as predictor of LAAT in overall cohort of patients

Figure 2: The distribution of the presence of LAAT based on the CHA<sub>2</sub>DS<sub>2</sub>VASc score

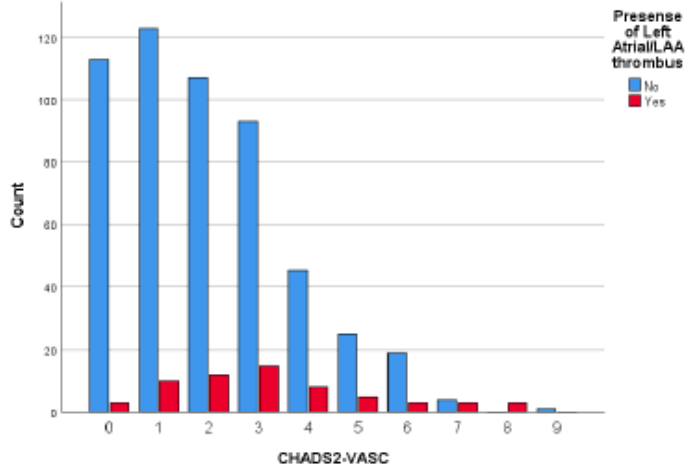


Figure 3: Distribution of the presence of LAAT according to the KATZ score

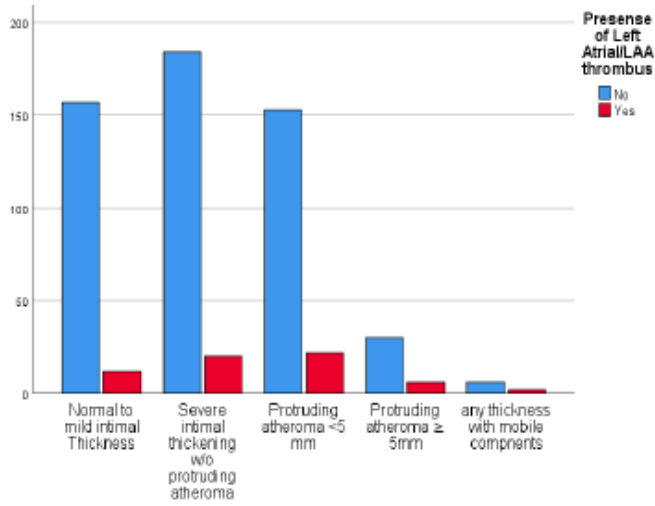


Figure 4. ROC curve of KATZ score as predictor of LAAT in overall cohort of patients

